



Certificate of Analysis

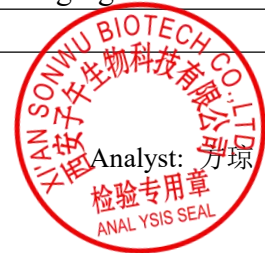
Product name	Crisaborole	Manufacture date	Jan.14.2024
Batch number	SW240114	Analysis date	Jan.15.2024
Batch quantity	500kg	Expiry date	Jan.14.2026

Characteristic/method	Specification	Result
Appearance	White or off-white powder	Conforms
Identification	By IR	Conforms
	By HPLC	Conforms
Assay	≥98%	99.85%
Solubility	Soluble	Conforms
Loss on Drying	≤1.0%	0.55%
Residual Solvents	Methanol: ≤3000ppm	ND
	Ethanol: ≤5000ppm	4000ppm
Related Substances	Any single impurity: ≤0.3%	0.1%
	Total impurities: ≤1.0%	0.28%
Pseudomonas aeruginosa	Negative	Negative
Staphylococcus aureus	Negative	Negative
Conclusion	Conforming to Enterprise Standard	

Packing description:	Sealed export grade drum & double of sealed plastic bag
Storage:	Store in cool & dry place. keep away from strong light and heat
Shelf life:	2 years when properly stored

Quality Assurance Officer: 李强

Corrector: 佟丽华



Analyst: 方璟